



# Help Create the Northern Gateway



**Way'** Welcome  
to the

Okanagan Rail Trail **xwít'í? s'w'k'na?qin**  
Kilometre Zero gateway at  
**K'ək'maplqs** (Little Head of the Lake)

Once an industrial corridor and shunting space for an active rail line, this area is being transformed to be the start/end point of the Okanagan Rail Trail.

The northern gateway at Kilometre Zero will create a safe, spacious trailhead. Site improvements and interpretation will reflect and celebrate the unique natural and cultural values of the northern (Kalamalka) trail section, and the Little Head of the Lake area in Coldstream.



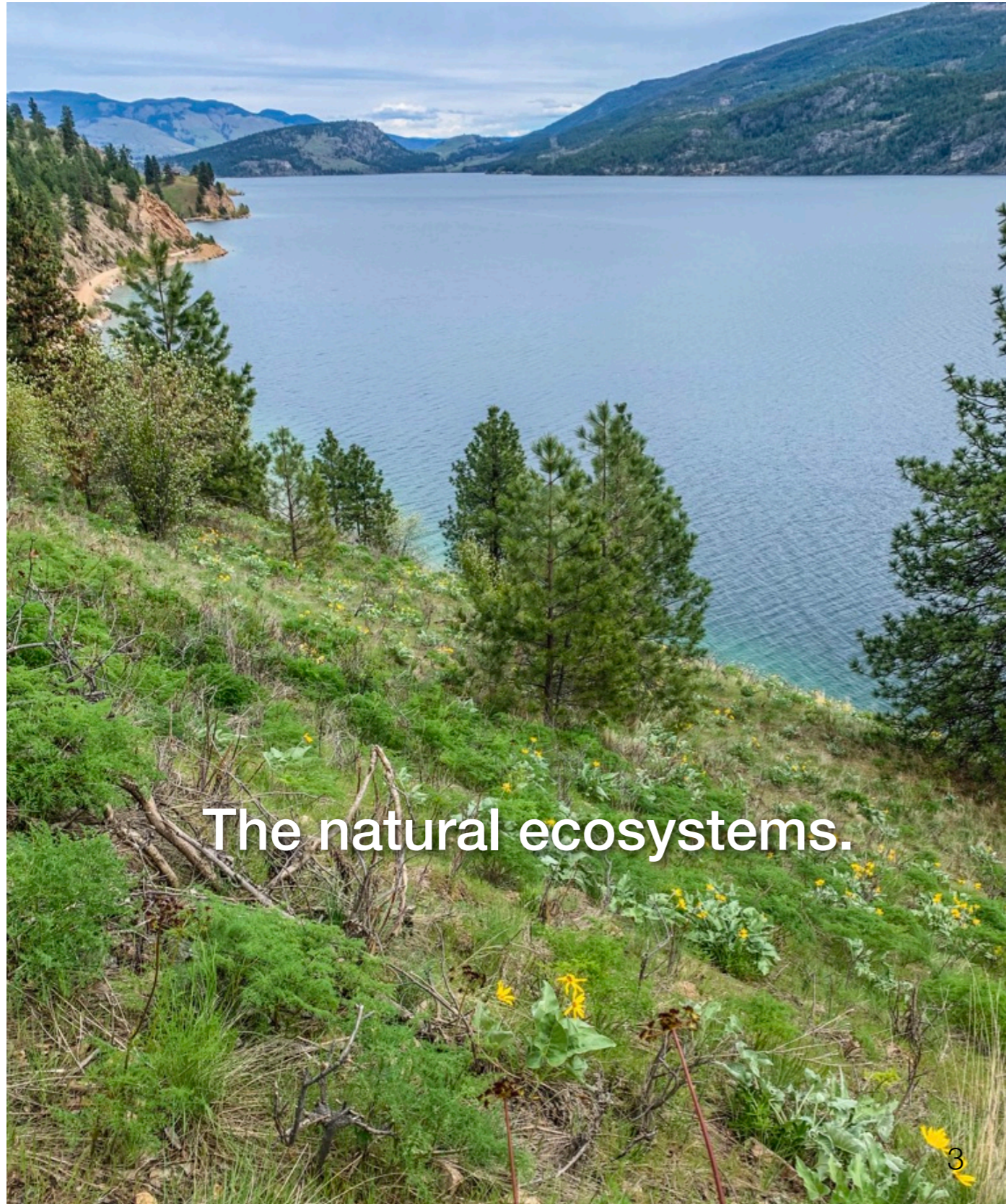
**Off-road and spacious, Kilometre Zero will provide a safe place to meet up with friends for the trail journey.**



**The alternative.**



**It will inspire trail users to appreciate, understand, and respect the Kalamalka trail section.**



The natural ecosystems.



The lake and shoreline.



How we can help care for this special place.

# Kilometre Zero provides a place to celebrate the historical and contemporary Syilx place on the land.

“The Okanagan Rail Trail was originally part of a larger interconnected network of trails utilized by our People to access all parts of Northern Syilx Territory to undertake essential sustenance, societal and spiritual activities. K’ək’məplqs was important for fishing, hunting, and harvesting, and remains of pit houses have been found in the vicinity.”

Byron Louis, Chief, Okanagan Indian Band



Sheldon Pierre Louis, puti kʷala – we are still here, 2020



Traditional Okanagan pithouse ca.1920  
Photo Credit: Sncəwips Heritage Museum

# The Northern Gateway will exemplify qualities of the Okanagan Rail Trail Experience

## Experience

“A unique way to experience the beauty of the Okanagan”

## Welcoming

“...open and inclusive access”  
“...safe, respectful amenities”

## Use of nsyilxcen

“... responsibility in managing and protecting the natural ecological systems and archaeological areas along the ORT, and making use of these in a way that is respectful of the Syilx People’s culture, traditions, language and history in their territory...”



## Historical

“We will celebrate the rich cultural history of our region”

## Community

“Born out of the pride of our local communities...”

## Environment

“...learn about and enjoy the rich natural ecosystems”  
“...preservation of the natural environment and everything within it is key, and decisions will be made with sustainability in mind.”

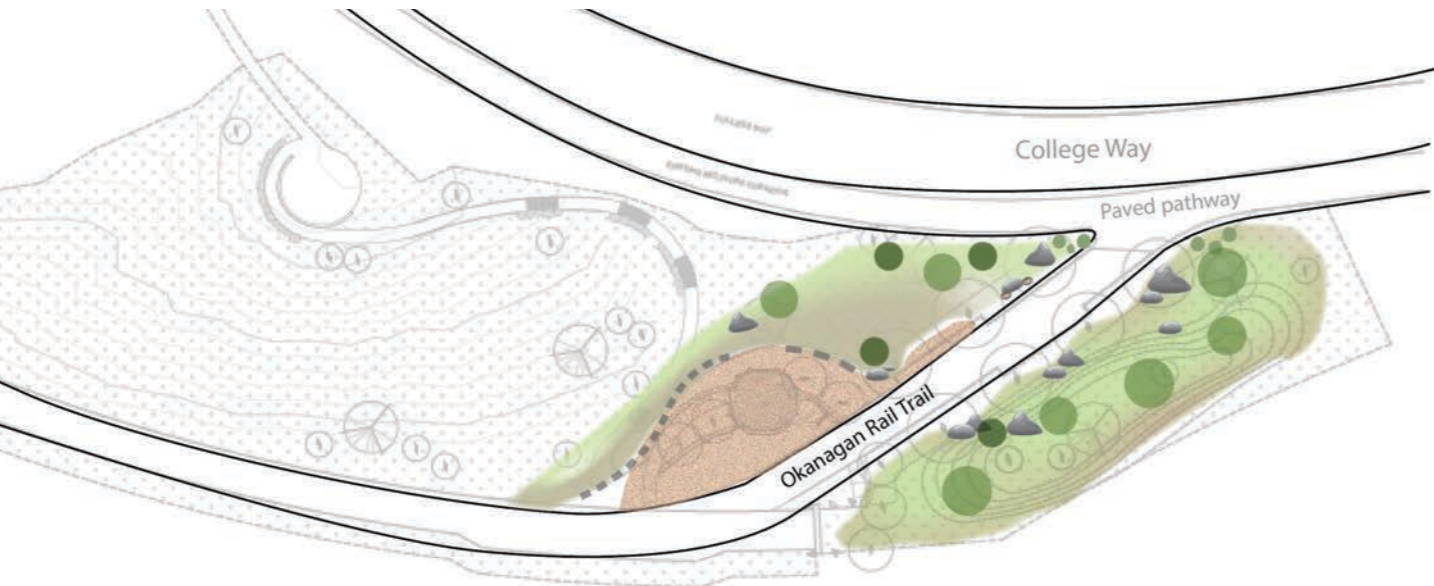
# Kilometre Zero will be developed in phases.

## Current fundraising is for Phase 1.

### *Phase 1 Kilometre Zero*

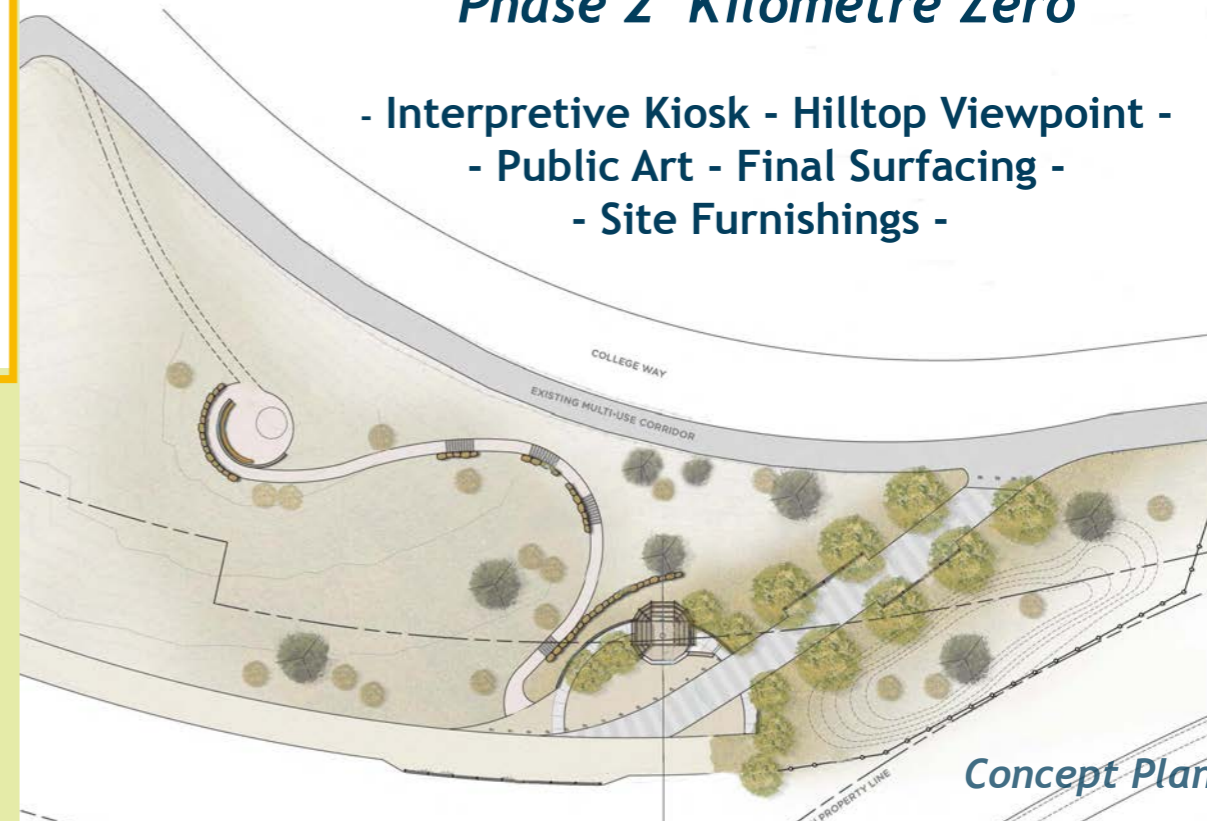
- Native Plant Restoration - Indigenous Gardens - Plaza -
- Syilx and Nature Interpretation -

**\$100 = 1 square metre**



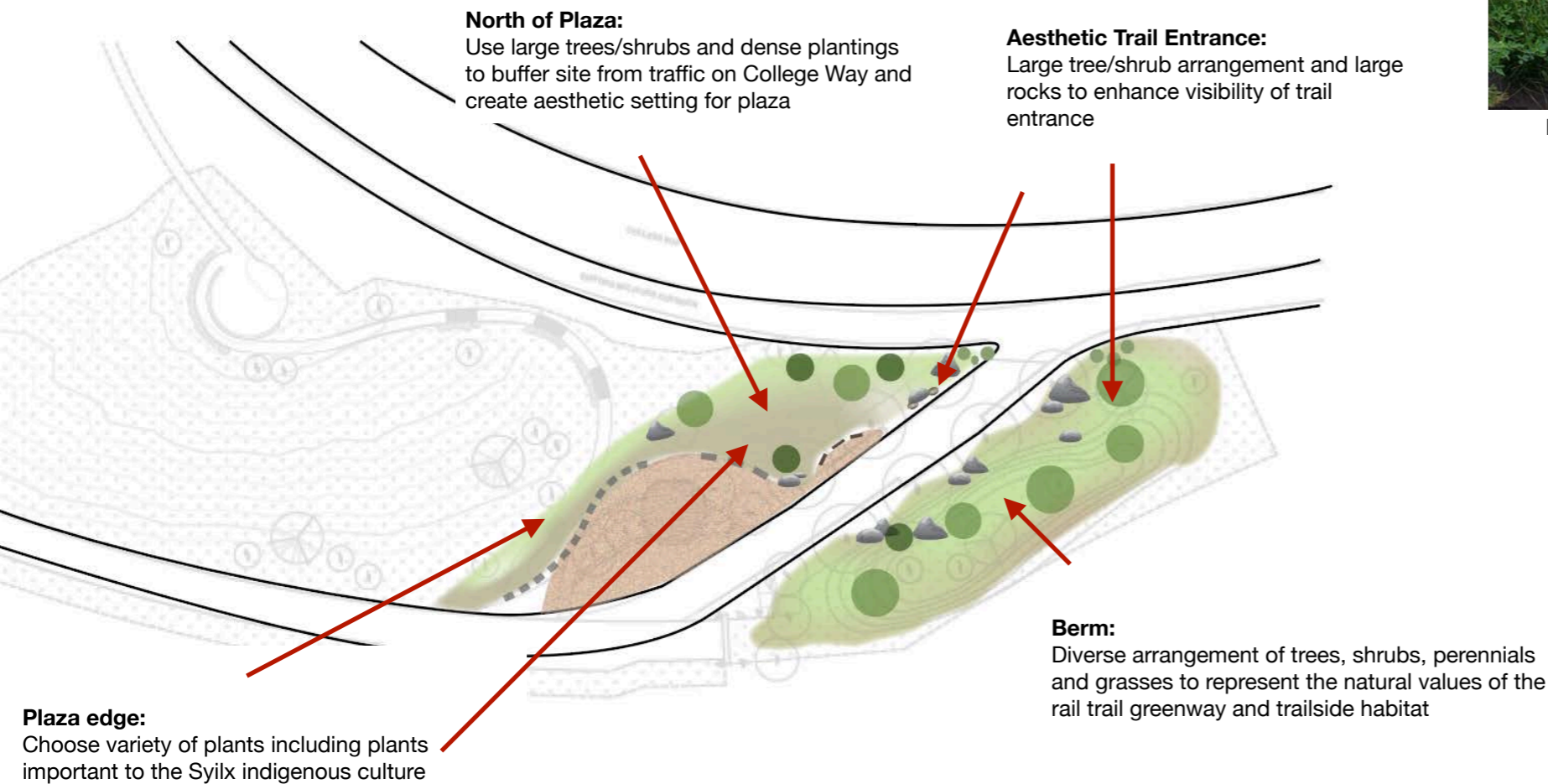
### *Phase 2 Kilometre Zero*

- Interpretive Kiosk - Hilltop Viewpoint -
- Public Art - Final Surfacing -
- Site Furnishings -



**Development will be guided by the  
Okanagan Rail Trail Master Plan and  
site planning.**

# The first phase includes landscaping with native plants.



**Brown Eyed Susan**  
mitl'mn



**Great Basin Big Sagebrush**  
cq'was'q'lstn



**Shrubby Penstemon**  
nttqtqik'xn



**Showy Aster**  
ntsásstests



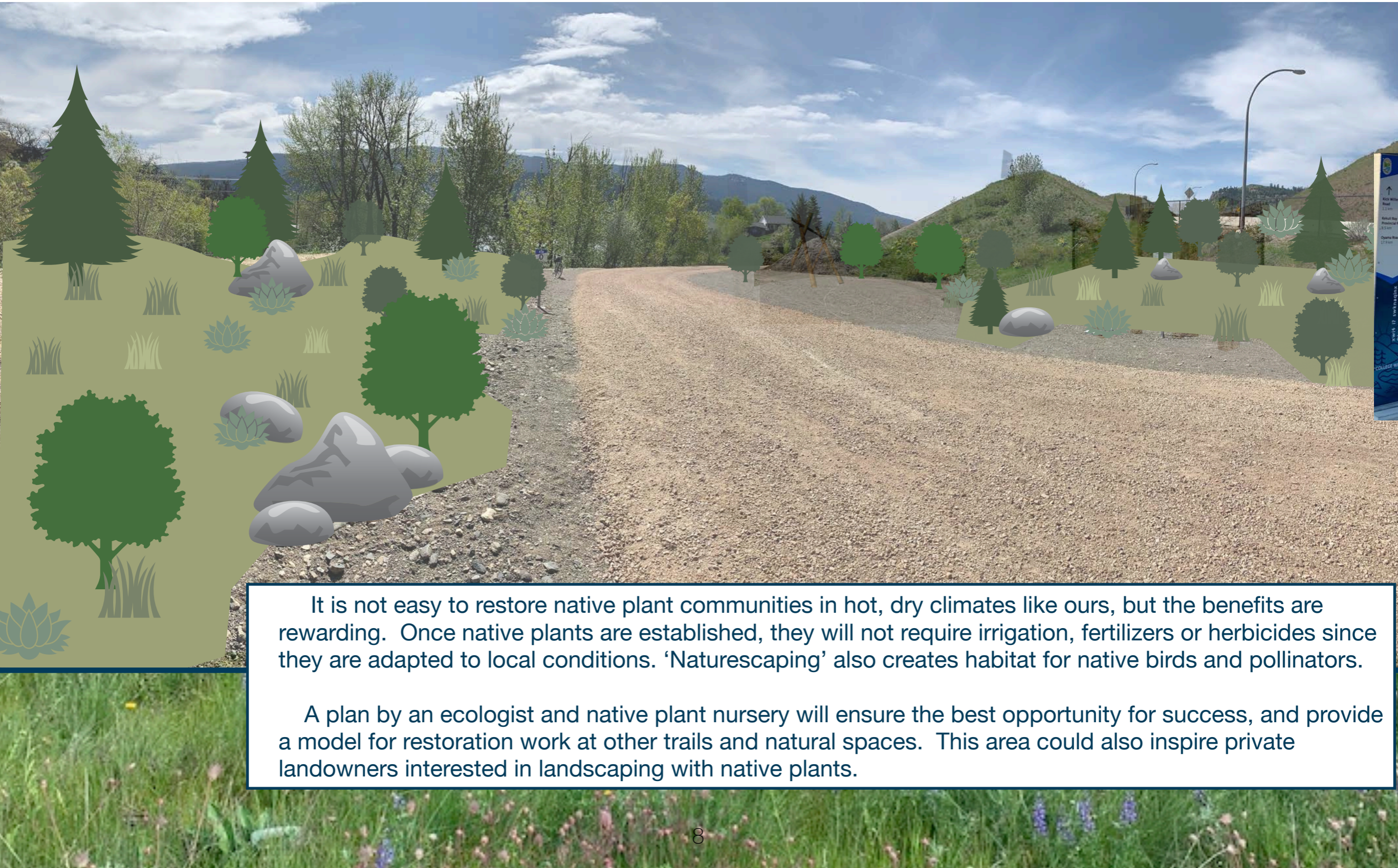
**Arrowleaf Balsamroot**  
smúkwa?xn



**Ponderosa Pine**

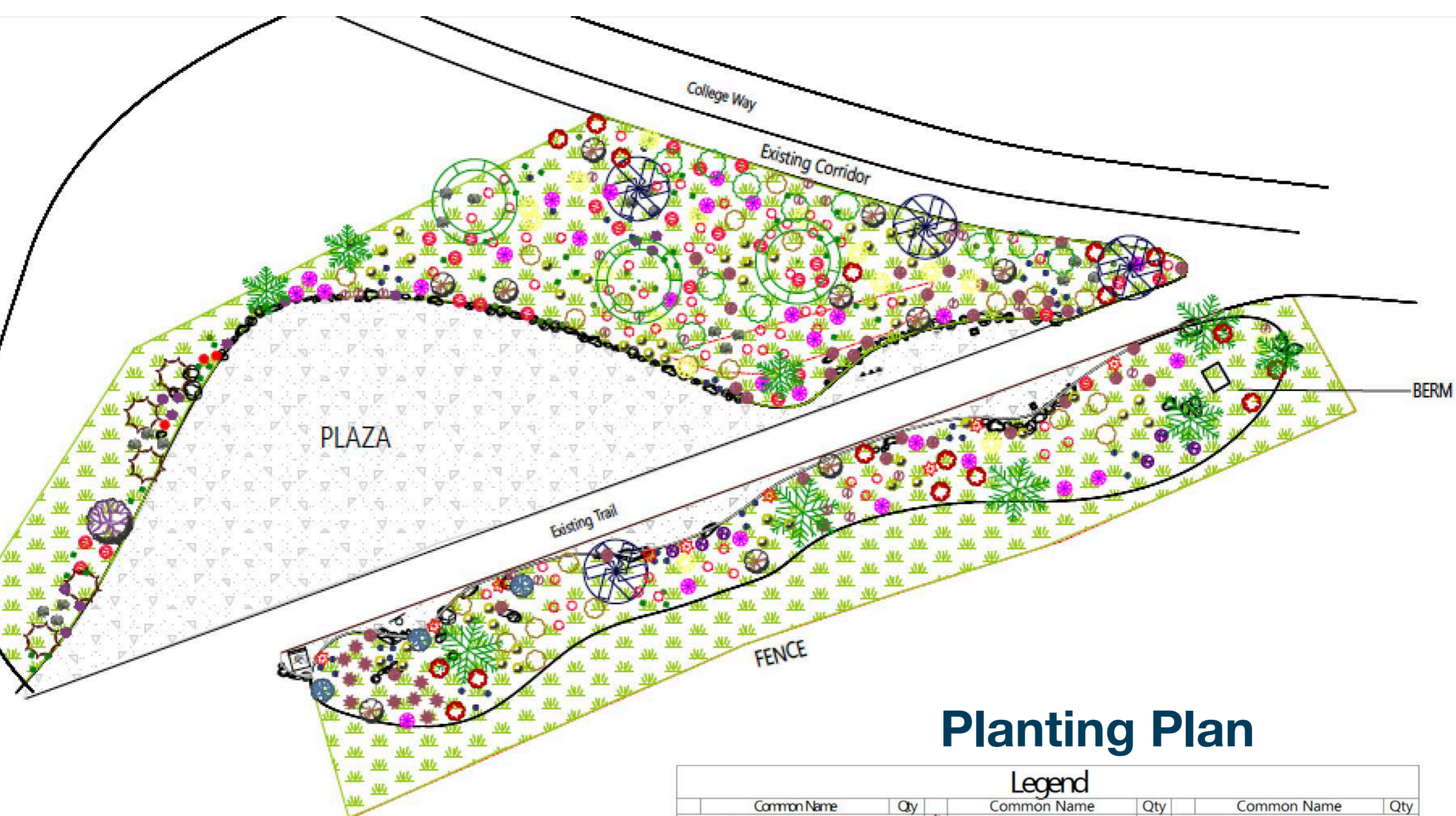


# Native Plant Restoration



It is not easy to restore native plant communities in hot, dry climates like ours, but the benefits are rewarding. Once native plants are established, they will not require irrigation, fertilizers or herbicides since they are adapted to local conditions. ‘Naturescaping’ also creates habitat for native birds and pollinators.

A plan by an ecologist and native plant nursery will ensure the best opportunity for success, and provide a model for restoration work at other trails and natural spaces. This area could also inspire private landowners interested in landscaping with native plants.



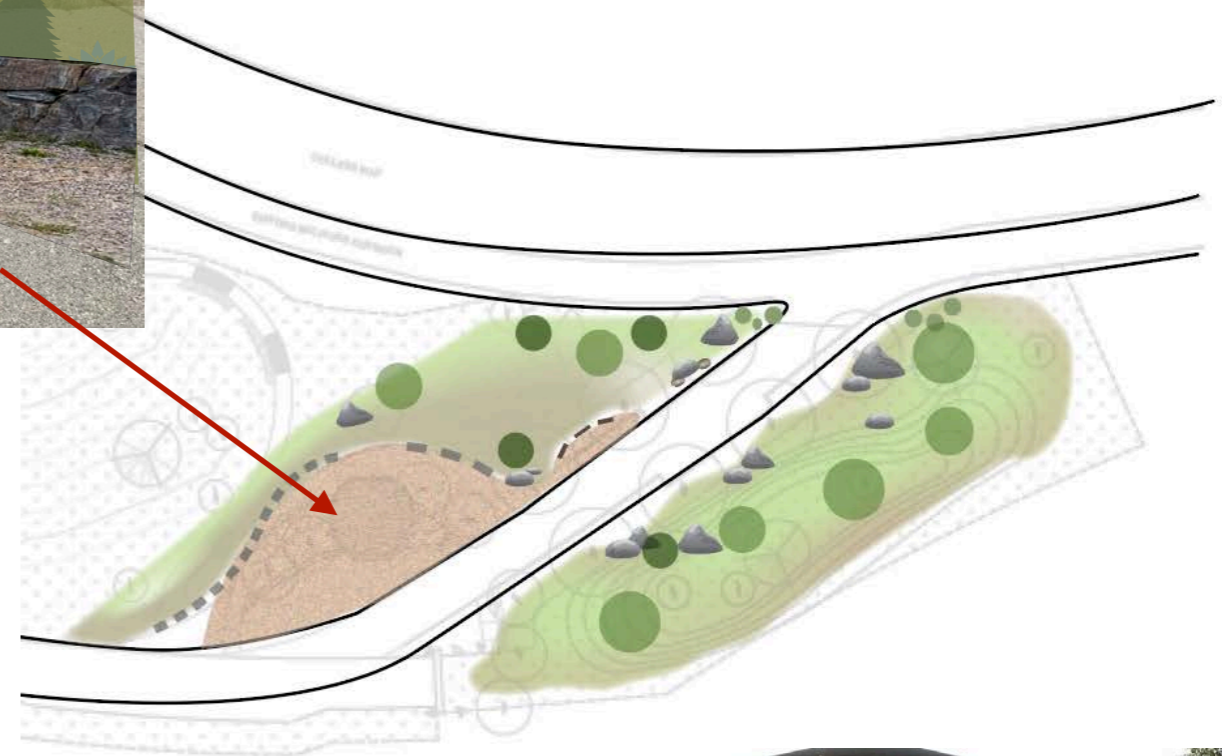
## Planting Plan

Legend					
Common Name	Qty	Common Name	Qty	Common Name	Qty
Flower, Annual		Geum triflorum	12	Shrub, Evergreen Broadleaf	
Balsamroot	65	Pasture Sage	28	Grape Holly, Oregon	6
Flower, Edible		Penstemon, Shrubby	34	Great Basin Big Sage Brush	17
Onion, nodding	20	Snow Buckwheat	41	Tree, Deciduous	
Flower, Grass		Yarrow, White	27	Saskatoon	10
Grass, June	3	Shrub, Cacti		Sumac, Smooth	11
Flower, Perennial		Cactus, Priddy Pear	9	Tree, Evergreen	
Alum Root	38	Shrub, Deciduous		Chokecherry	5
Aster, conspicuous	19	Currant, Waxy	3	Fir, Douglas	3
Bitterroot	10	Elderberry, American	1	Juniper, Rocky Mountain	4
Buckwheat, Creamy	6	Mockorange	16	Pine, Ponderosa	9
Gallardia aristata	48	Rabbitbrush	21		
Hydroseeded area, with an infill of native grass plugs (Bluebunch Wheat grass, Idaho Fescue, June grass, Needle and Thread grass)					400

# Phase 1 also includes basic improvements to the plaza area.



A low seating wall and rocks will edge the plaza creating a comfortable group staging area and place for future trail events.



# Future phases will complete the site with features such as the ideas shown below.



Story Poles



Welcome and Interpretive Signage



Interpretive installations, public art, and a hilltop lookout would all be part of Phase 2 improvements. All items subject to design, approvals and fundraising.



Plaza finishing



Shade Pergola



Gateway Marker Options



Public Art



**This year we needed the Okanagan Rail Trail  
more than ever before.**

**Here is your chance to say thanks through the  
'Sunflower Campaign' for Phase 1 improvements.**



***'Okanagan Sunflower'***  
**smúk<sup>w</sup>a?xn**  
**Arrowleaf Balsamroot**

The name 'Sunflower Campaign' is symbolic of the joy of our spring wildflowers and the hope from planting for the future. Donations will help restore the beautiful Arrowleaf Balsamroot and other native plants to honour the natural environment and to welcome visitors to learn more.

# How you can help create the Northern Gateway.

## Donate Now

Donations are being accepted by:

### **Community Foundation of the North Okanagan:**

- by on-line donation. Select “Okanagan Rail Trail – Km Zero” in the drop down box.
- by cheque to Community Foundation of the North Okanagan (304 – 3402 – 27th Avenue, Vernon BC V1T 1S1). Please add Okanagan Rail Trail – Km Zero in memo field.
- by e-transfer to info@cfno.org. Please specify that the donation is for the Okanagan Rail Trail.
- or use the CFNO contact form to find out other ways to donate.

### **Central Okanagan Foundation:**

- by on-line donation. Select “Okanagan Rail Trail – Km Zero” in the drop down box.
- by cheque to Central Okanagan Foundation (Landmark 1, 306 – 1726 Dolphin Avenue, Kelowna, BC V1Y 9R9). Please add Okanagan Rail Trail – Km Zero in memo field.

Donations in excess of \$25 will receive a tax deduction receipt.

If you donate \$100 or more, and wish to leave a message on the **Sunflower Campaign Gratitude Page (20 words max)**, please send the message along with your donation.

**Find out more.**

## **Help Fundraise**

Contact Friends of Okanagan Rail Trail if you, your organization or business would like to help with fundraising for Kilometre Zero, or if you are interested in contributing goods or services in-kind, or if you would just like to learn more.

**hello@okanaganrailtrail.ca**



**Follow us on  
Facebook and Instagram**



**Thank you for being part of this legacy.**

Thank you to donors who have contributed so far, and to the agencies below who provided grants to kick start the project.



**TD Friends of the  
Environment Foundation**



**REGIONAL  
DISTRICT  
NORTH  
OKANAGAN**