

The ORT Coldstream Trailhead includes the 4 segments that together comprise the transition from roadways to the non-motorized, scenic Okanagan Rail Trail (ORT). Each area serves a different purpose and concepts for development are described below. The segments are coordinated to provide a safe and enjoyable trail experience, while mitigating impacts to adjacent residential neighborhoods. For more information regarding Km 0 at Little Head of the Lake and Kick Willie Parking Lot, refer to the provided enlargements plans.

**1 COLDSTREAM PARKING LOT**

The design process for a future parking lot located along Kalamalka Lake Road in the District of Coldstream is underway. An existing multi-use pathway will connect this parking lot to the Okanagan Rail Trail.

**2 KM 0 AT LITTLE HEAD OF THE LAKE**

Located at the start / end of the official Okanagan Rail Trail, Km 0 at Little Head of the Lake provides an aesthetic space for trail users to meet, take photos, celebrate the role of donors and the community, build excitement about the area and the trail, and learn about the trail, the history of the site and trail etiquette. The following amenities are included in the plan:

- Trail signage (wayfinding, trail etiquette, trail stewardship)
- Flat, hard surface gathering area with seating and shade trees
- Lookout viewport with sculpture feature
- Engaging interpretive media that builds a unique sense of place focused on Syilx culture and history, Rail Trail history, and trail stewardship and etiquette.
- Restoration planting including plants significant in Syilx culture

**3 OKANAGAN RAIL TRAIL EXTENSION**

The extension of the Rail Trail to end at Km 0 at Little Head of the Lake is currently underway. The following upgrades are recommended in addition to the trail work and require the involvement of and coordination between the District of Coldstream and the Regional District of the North Okanagan:

- A restoration plan with goals to enhance aesthetics, visually and thematically connect the areas, enhance natural habitat, create opportunities for phased future development, and encourage community stewardship
- Invasive species removal
- Restoration planting including plants significant in Syilx culture

**4 KICK WILLIE PARKING LOT**

The site of Kick Willie Parking Lot currently serves as the last parking area before the Kalamalka Lake section of the Okanagan Rail Trail, and in the absence of the northern trail extension to College Way has been used as the informal trail access point. Upgrades will provide the following amenities to trail users:

- Paved parking stalls for 50 vehicles
- Washroom facilities with 2 stalls
- Shaded areas to escape the sun
- Restoration planting including plants significant in Syilx culture
- Additional fencing along Westkal Road will be required to prevent on-going ad hoc access and bank deterioration.





**Km 0 at Little Head of the Lake**  
(K'ək'mapłqs)

Km 0 at Little Head of the Lake marks both the gateway and the terminus of the Okanagan Rail Trail (ORT). It is intended to be a transition space, a meeting point, and a gathering area for trail users who are beginning or ending their excursion. It allows users to celebrate their journey, take in picturesque views, and learn about the history of the trailhead site and of the Rail Trail itself, as well as trail etiquette and stewardship. The trailhead is called Little Head of the Lake (K'ək'mapłqs), which is the Syilx common name for K'ək'mapłqs. K'ək'mapłqs can be observed from the top of an existing high point which is unlike any other along the rail corridor.

The plaza space combines two important interpretative themes: the historical significance of the site to Syilx people and, more recently, as a rail corridor. The themes are expressed through the following elements in the design:

- Syilx history:
- 1. **Kiosk structure** - form and character resembles a pit house with a symbolic "ladder" as a dominant element in the space.
  - 2. **Weaving paving pattern** - represents the overlapping of tule mats on lodges.

- Railway history:
- 1. **Rail tie paving pattern** - sandblasted concrete resembles rail tie patterning.
  - 2. **Gateway feature** - is a series of post inspired by train bridge architecture which are a symbol of rail history in the area. Donor plaques along the posts are incorporated to celebrate the people who have transformed the rail corridor from an abandoned rail line to a successful recreational corridor. The gateway feature is a dominant element that trail users see as they travel along the recreational corridor towards the plaza area. As one rides closer to the space, they see that the trail ends beyond the feature and wood rail ties begin, representing the current end of the rail trail but delineating the possible future expansion of the trail. Beyond the rail ties one can observe the existing train bridge that is still in use by CN Rail, providing a direct contemporary tie to the historical use of the space.

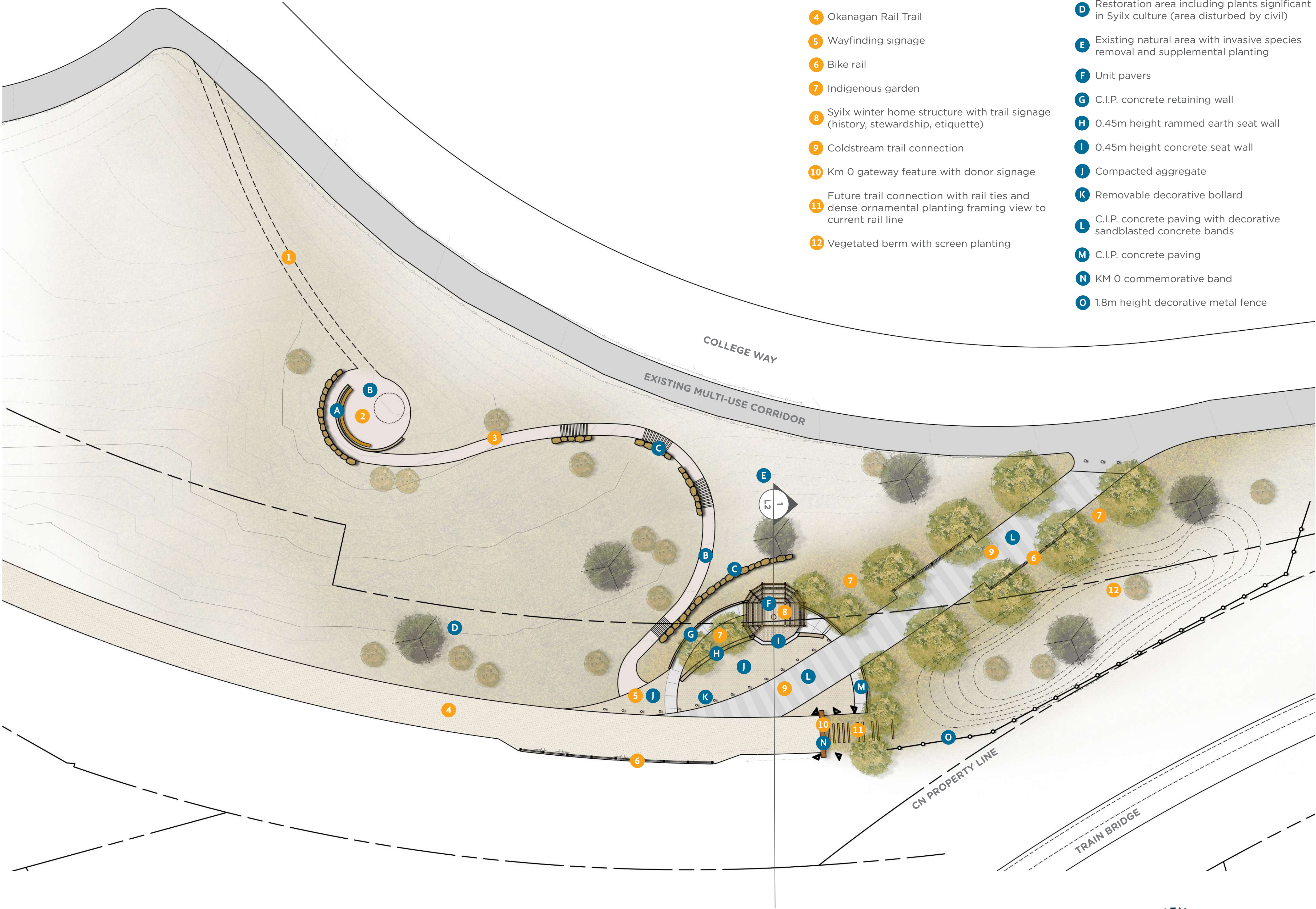
The interpretive elements are integrated within usable space for people to stop, sit, relax, reflect, celebrate and learn. If the trail continues to expand north to Vernon, Km 0 would no longer be the terminus of the corridor, but would function as a landmark along the trail. Elements in the space are designed to function in both possible circumstances.

**FEATURES KEY:**

- 1 Future/potential barrier free lookout trail
- 2 Lookout point (refer to drawings 1/L-3)
- 3 Lookout trail (1.5m wide nature trail with concrete crib stairs)
- 4 Okanagan Rail Trail
- 5 Wayfinding signage
- 6 Bike rail
- 7 Indigenous garden
- 8 Syilx winter home structure with trail signage (history, stewardship, etiquette)
- 9 Coldstream trail connection
- 10 Km 0 gateway feature with donor signage
- 11 Future trail connection with rail ties and dense ornamental planting framing view to current rail line
- 12 Vegetated berm with screen planting

**MATERIALS KEY:**

- A Rammed earth retaining wall
- B Compacted earth surfacing
- C Drystackd rock retaining wall
- D Restoration area including plants significant in Syilx culture (area disturbed by civil)
- E Existing natural area with invasive species removal and supplemental planting
- F Unit pavers
- G C.I.P. concrete retaining wall
- H 0.45m height rammed earth seat wall
- I 0.45m height concrete seat wall
- J Compacted aggregate
- K Removable decorative bollard
- L C.I.P. concrete paving with decorative sandblasted concrete bands
- M C.I.P. concrete paving
- N KM 0 commemorative band
- O 1.8m height decorative metal fence





**DESIGN OBJECTIVES:**

- Celebrate the history of the railline and the development of the Rail Trail, the history of Syilx people, and the contributions of private donors and volunteers.
- Educate users regarding the trail history, etiquette and stewardship.
- Create a meeting place for trail users.
- Create picture-worthy elements that inspire people to stop and experience the space.

**DESIGN RECOMMENDATIONS:**

- Create a space for users to stop at the beginning / end of their journey on the rail trail to reflect upon their experience, and learn about the history of the trail and the history of the site.
- This is the only lookout along the ORT that provides views from a high point. Create a sculpture to draw people to the lookout.
- Recognize and celebrate the significance of this place to the Syilx people. Work closely with local OKIB members and artists to create elements that appropriately reflect Syilx architecture, history and culture.
- Create a space that can be memorable and functional if the Rail Trail continues north in the future.
- Recognize the contribution of private donors and volunteers.
- Accommodate 75+ people in the plaza.
- Accommodate parking for 30+ bicycles on low-impact rail bike support.
- Create a distinctive feature that stands out through its use of formal hardscape materials and designed interpretive element, but also utilizes colorus and textures that are appropriate to the natural Okanagan context.

**CHARACTER & INSPIRATION**



Vegetation in rail line



Syilx architecture - Pit house



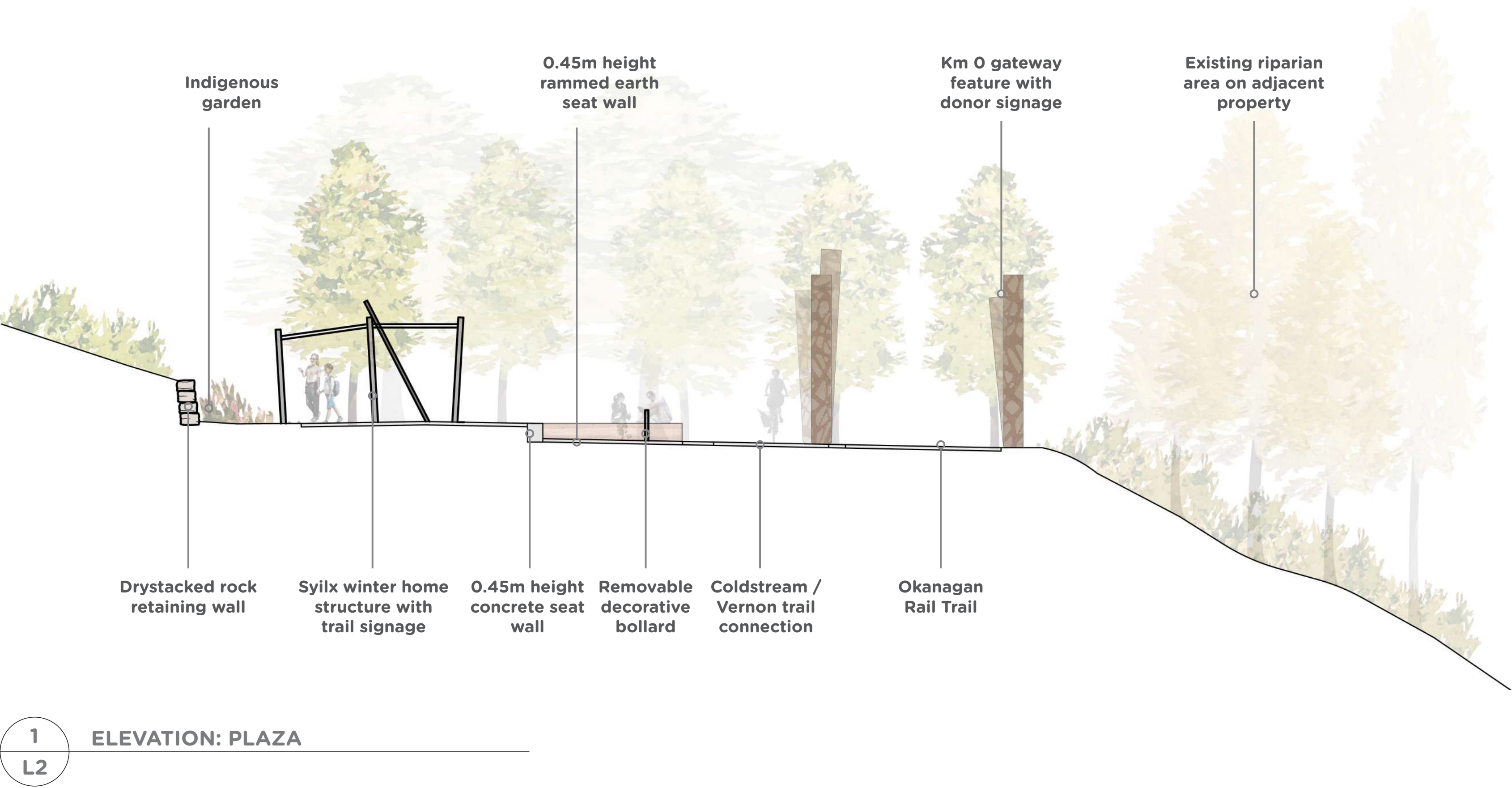
Weaving train tracks



Syilx sculpture



View of existing train bridge



L2

**KM 0 AT LITTLE HEAD OF THE LAKE: ELEVATION**

OKANAGAN RAIL TRAIL COLDSTREAM TRAILHEAD

0 1 2 3 4 5 10m

ISSUED FOR PUBLIC CONSULTATION NOVEMBER 07, 2019



MATERIALS & FURNISHINGS



Drystack rock wall



Rammed earth seat wall



Concrete with sandblasted pattern



Removable decorative bollard



Bike rail



Unit pavers

GATEWAY FEATURE



Gateway posts

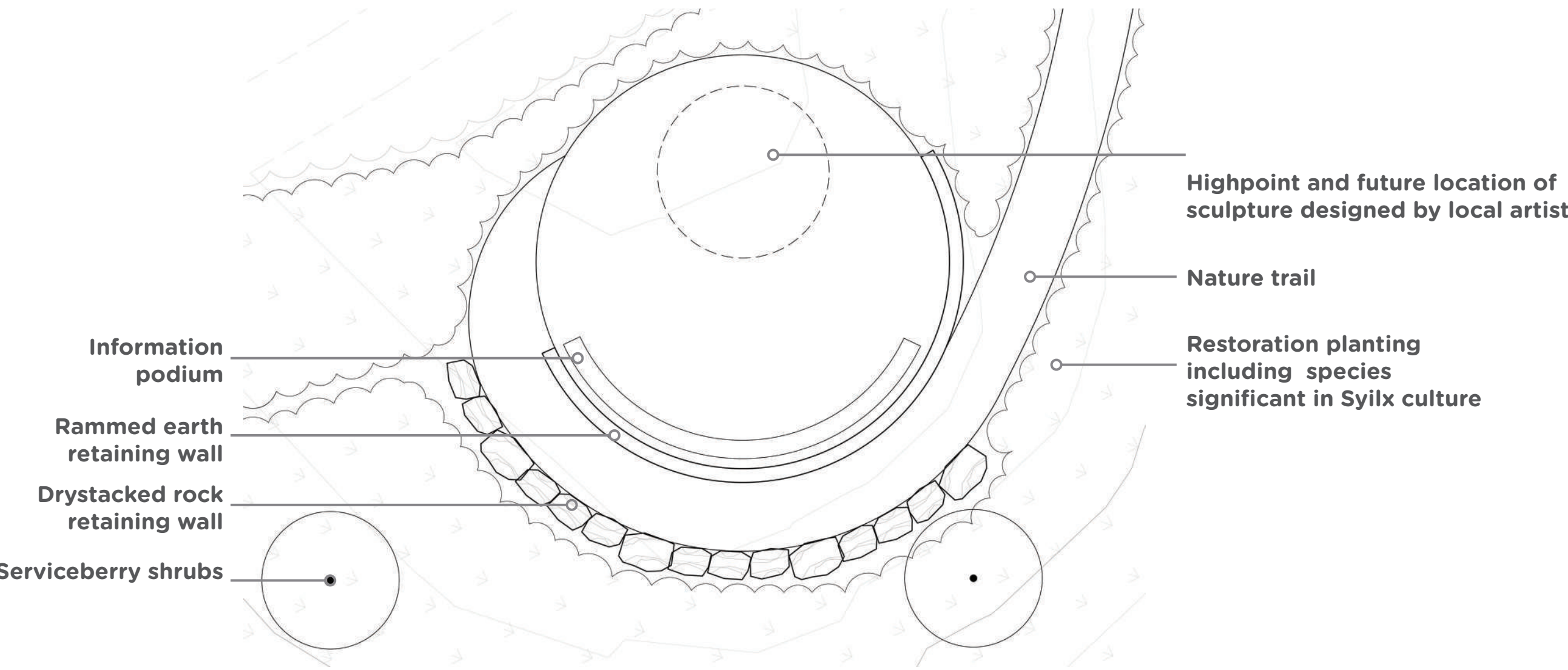


Commemorative band

- Gateway feature at Km 0 to act as current finish line for Rail Trail and future landmark if trail expands.
- Structure is inspired by the form and character of a train bridge.
- Commemorative band at Km 0 with engravings of plaza name and Km 0 to delineate start / finish of the ORT.
- Panels on structure to contain plaques with names of donors and volunteers to celebrate their contributions. Additional panels encouraging donations from interested trail users could also be included.
- Structure material to reflect the character of rail infrastructure.
- Located away from flow of traffic to create an opportunity for people to take unobstructed photos.

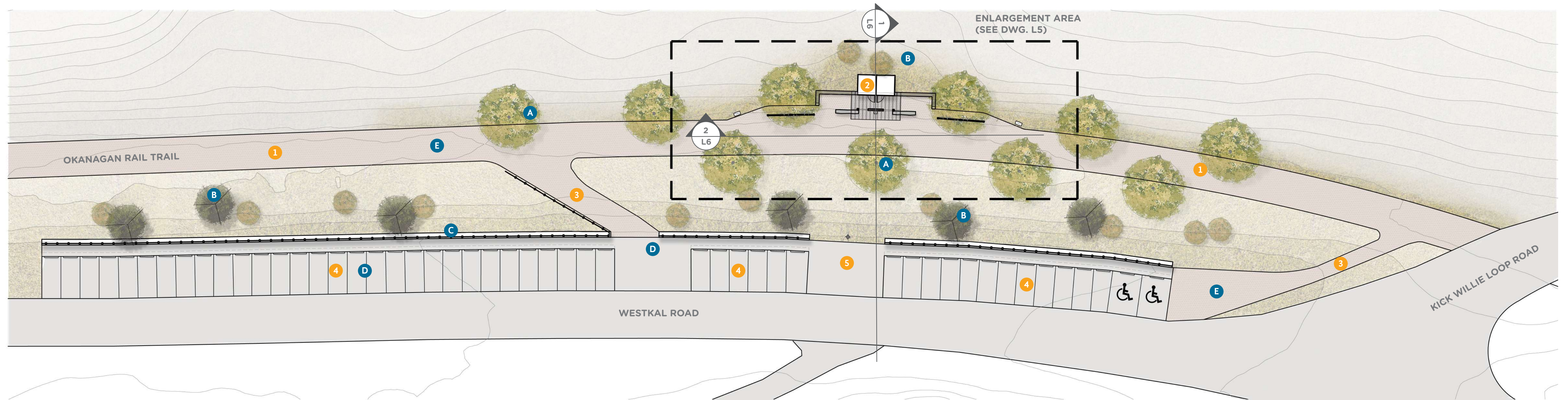
SCULPTURE AT LOOKOUT

- Sculpture appears perched at the top of the hill.
- Form to reflect / celebrate history and the significance of this site; to be developed by a local artist. Sculpture to be approximately 4-6m tall to appear larger than life, and be visible from a distance.
- Surrounding vegetation to remain low to ensure sculpture is the highest element in the landscape.
- Entire lookout point to be graded higher than surroundings to create a sense of dominance over the surroundings and ensure visibility from a distance.
- Information podium provides interpretive content about sculpture and identifies key landforms in the surrounding area that are visible from the lookout.



1 L3 SCULPTURE AT LOOKOUT





1 WESTKAL PARKING AREA PLAN  
L4

#### PRIMARY DESIGN OBJECTIVES

- Provide public washroom facilities that are accessible, durable and functional for trail users
- Provide safe facilities that do not promote use by non-trail users
- Provide the necessary amenities for people to start / continue or complete their trip along the trail

#### LAYERS & EXPERIENCES

- 50 parking stalls
- Washroom facility - 2 individual stalls
- Bicycle parking for 8 bikes
- Waiting area with seating near bathrooms
- Shaded area for people to escape the sun
- Trash receptacles
- Water fountain with dog bowl
- Restoration planting along steep slope with significant Sylix plants

#### FEATURES LEGEND:

- 1 Okanagan rail trail
- 2 Washroom facilities with shade structure and seating
- 3 Rail trail access to Westkal Parking Area
- 4 Parking lot
- 5 Fire truck access to existing fire hydrant

#### MATERIALS LEGEND:

- A Shade trees
- B Restoration planting with significant Sylix plants
- C Lock-block retaining wall with black vinyl chainlink fencing
- D Asphalt
- E Crushed aggregate

#### MATERIALS & FURNISHINGS:



Crushed aggregate



Stone bench



Bike rail



Water fountain with dog bowl



Seat wall



Bear-proof trash receptacles

L4

#### WESTKAL PARKING AREA - PLAN

OKANAGAN RAIL TRAIL COLDSTREAM TRAILHEAD

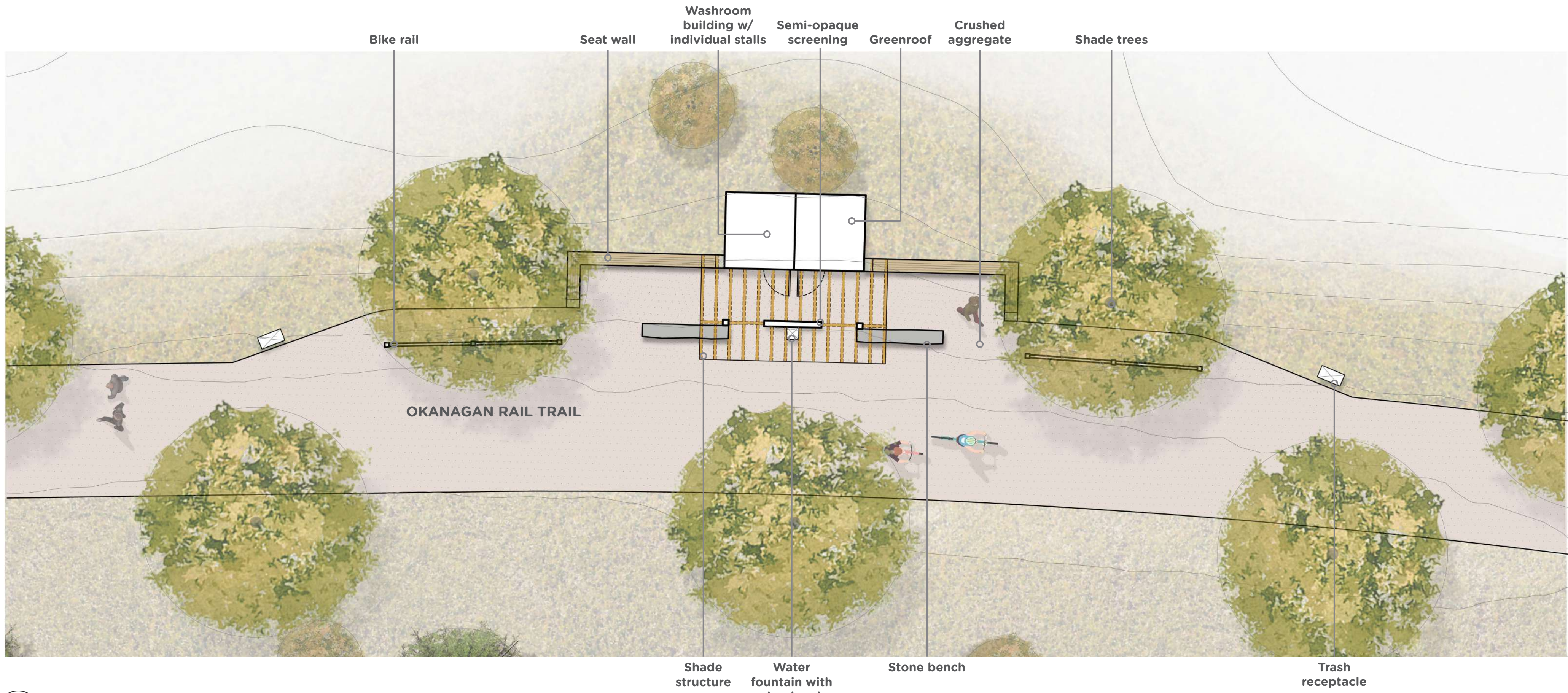
0 5 10 15 20 25m



ISSUED FOR PUBLIC CONSULTATION NOVEMBER 07, 2019

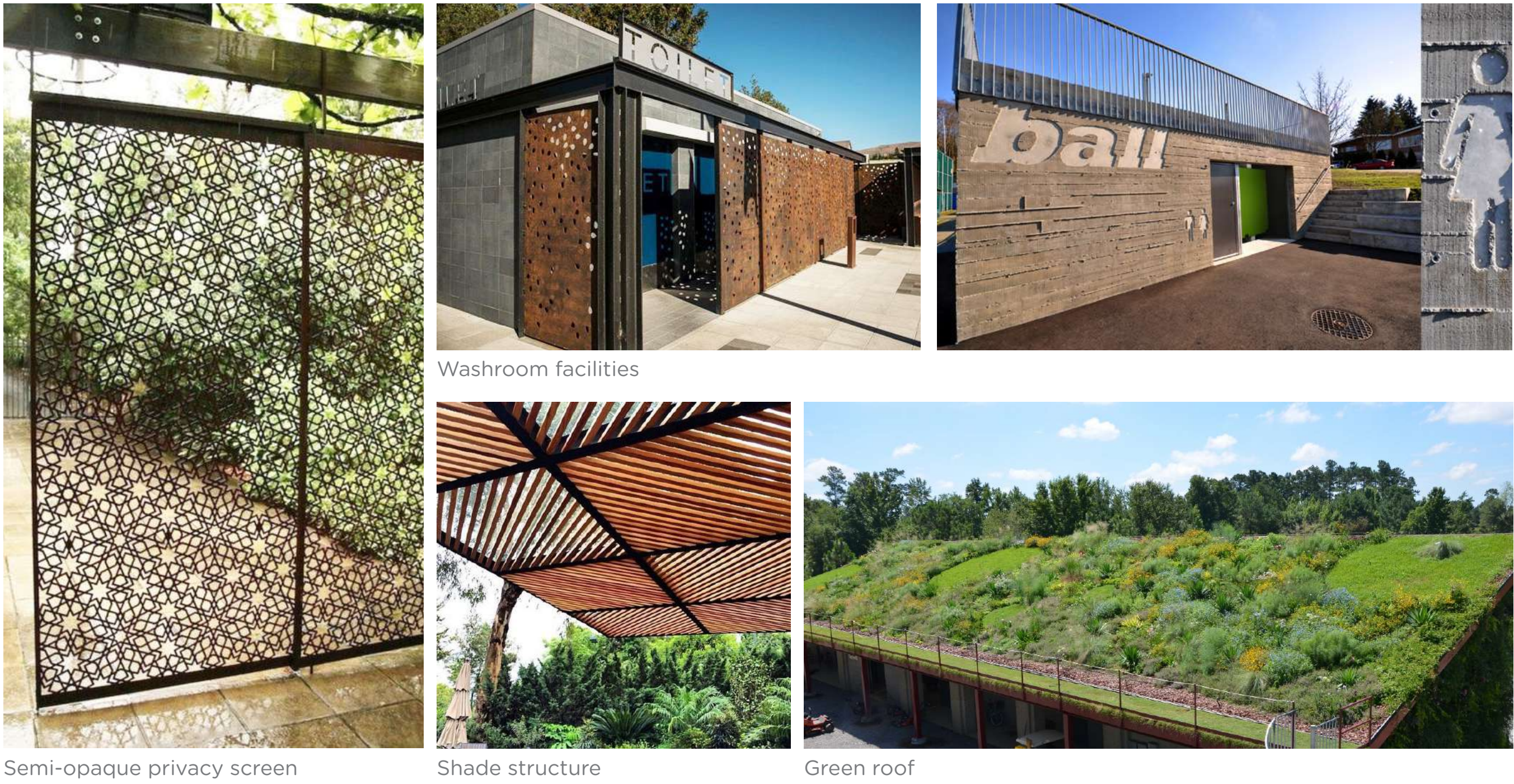






1  
L5  
ENLARGEMENT AREA: WASHROOM FACILITY

CHARACTER IMAGES:



PLANT CHARACTER IMAGES:



L5

WESTKAL PARKING AREA - ENLARGEMENT PLAN

OKANAGAN RAIL TRAIL COLDSTREAM TRAILHEAD



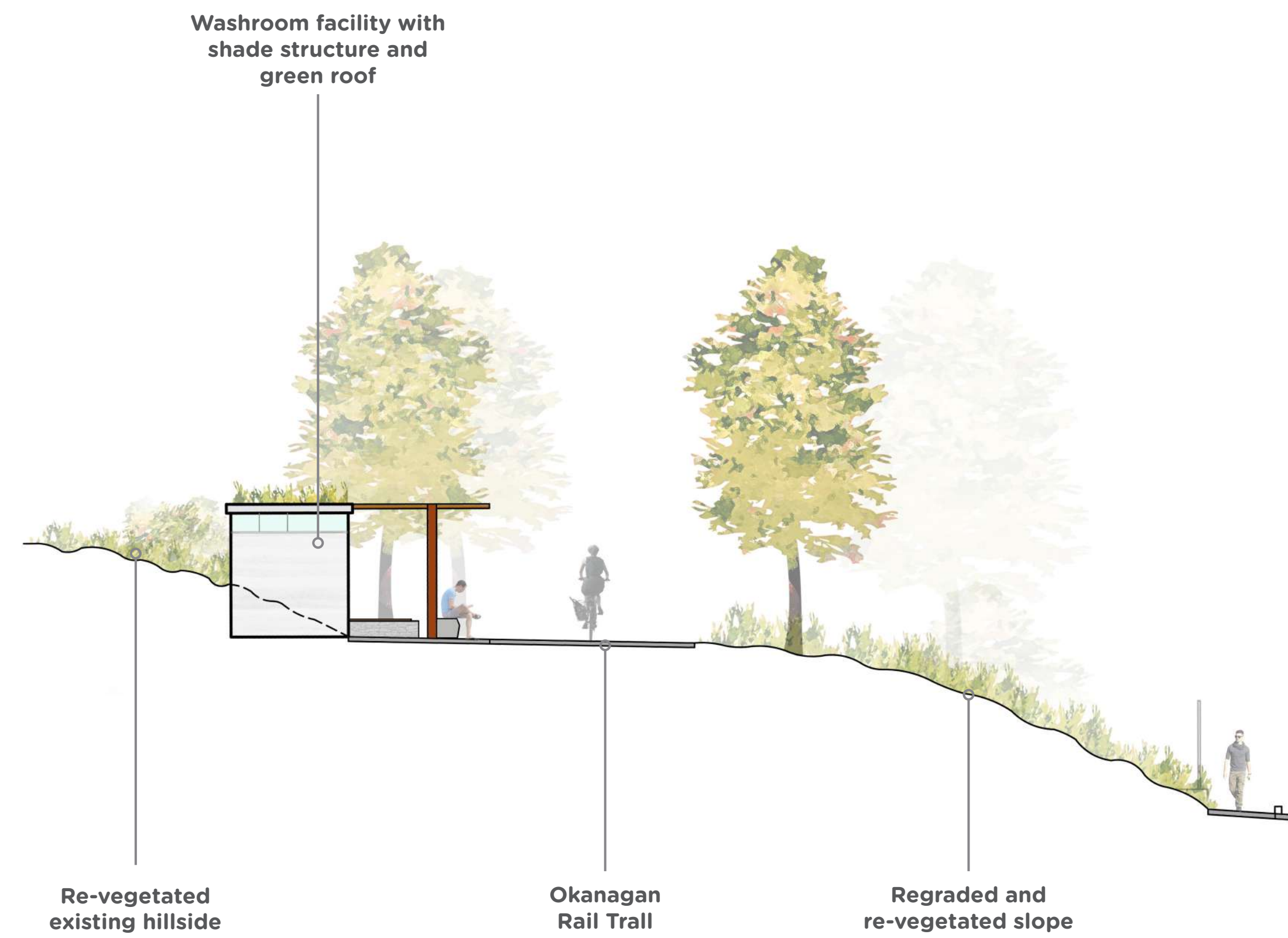
ISSUED FOR PUBLIC CONSULTATION NOVEMBER 07, 2019



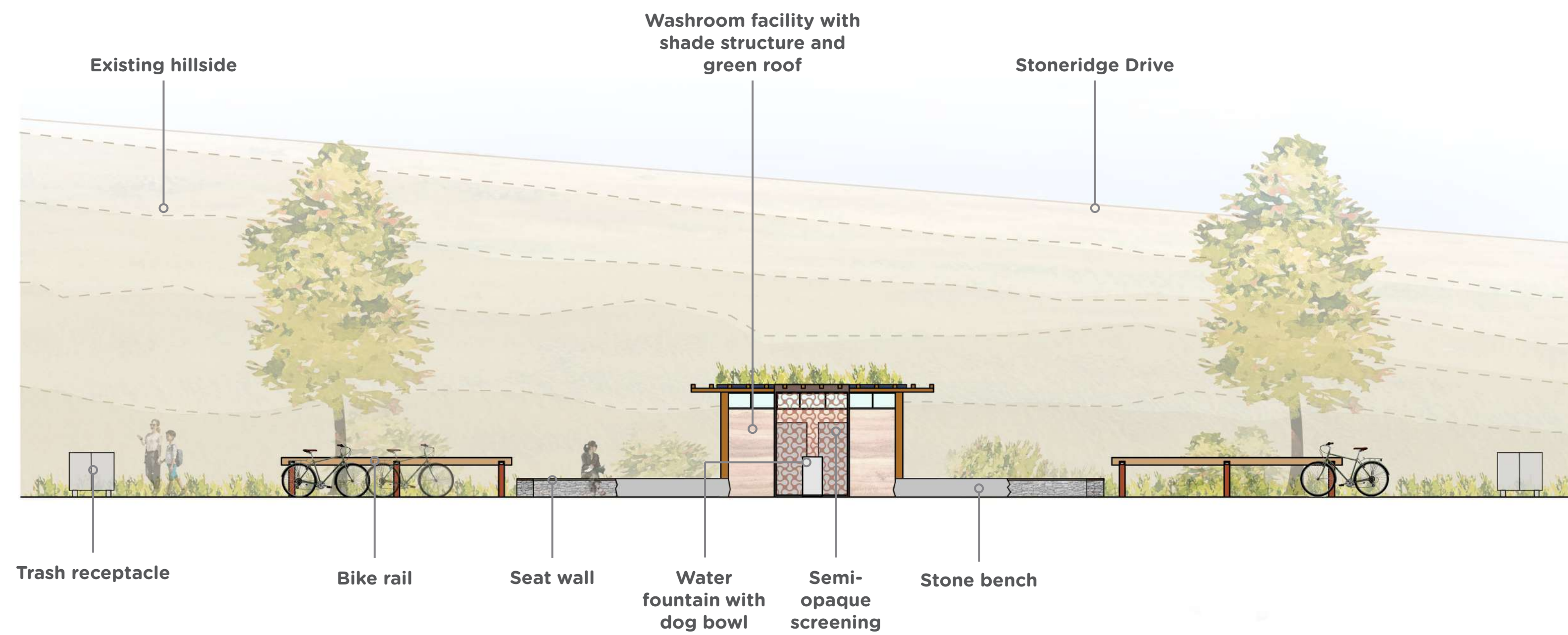
BENCH







1  
L6  
ELEVATION: WESTKAL PARKING AREA & WASHROOM FACILITIES



2  
L6  
ELEVATION: WASHROOM FACILITIES

# L6

## WESTKAL PARKING AREA - SECTION ELEVATIONS

OKANAGAN RAIL TRAIL COLDSTREAM TRAILHEAD



ISSUED FOR PUBLIC CONSULTATION NOVEMBER 07, 2019

